



# EtherNet/IP TCP/IP

Ethernet Connectivity is not just a buzzword, it is here and now. Information Technology is driving the way we work and live. It is also providing the feedback of information that customers are demanding.

The goal with our Panther P8 Print and Apply system is to provide our customers with the information that they need, anywhere in their plant. In addition to that, our customers need a way to interface our labeling system directly with Allen-Bradley PLCs without wiring discrete I/O signals. We achieve this goal by utilizing Ethernet/IP so we can plug the Panther P8 directly into your Allen-Bradley PLC network eliminating the need entirely for discrete signaling between your labeling system and your plant floor PLC.

The Panther P8 is our latest generation of Automated Label Print and Apply equipment designed to be the most rugged, feature-packed print and apply system in the industry. One can only be "state-of-the-art" for so long without change. Our Panther P8 is built upon the strengths of our highly acclaimed P2000 architecture with the controls that ensure that our system is the leader in today's market.

The I/O used in the new P8 is virtually limitless in terms of expandability. We have adopted "Slice I/O" as our new platform that allows us to add inputs, outputs, specialty interfaces, and communication devices by simply sliding in a thin "slice" of technology.

The P8 design utilizes a brilliant new FULL COLOR touch screen interface (*not just a colored background*) that allows us to provide the operators with the control and feedback that they need to keep the line running. Our display system is very simple to use, showing you all the information you will ever need, in full color. As with all our systems, the control system is self diagnosing, now with expanded detail.

Nothing will get past your Panther Labeling System without being labeled or you knowing EXACTLY why a product was not labeled. If there is a fault with the system (labels out, no air pressure, etc.) the Panther will surely let you know. In short, nothing gets by a Panther.

The ethernet connection in the Panther P8 also provides a means for you to view the status of the P8 from ANYWHERE in the plant on any PC with a web browser. There are eight (8) web pages showing the status of the system just as if you are standing in front of the machine. The data shown includes the status of all I/O points, timer value settings, system configuration, and statistics such as cycle counters, throughput rate, lifetime counters, hour meter, and more.

View system status from the built-in touch screen or from anywhere in the plant via the built-in web pages!

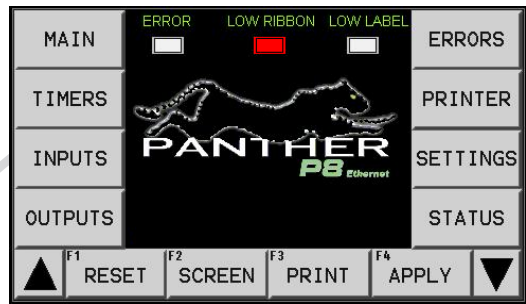


Panther P8 hybrid shown with 12" Stroke Tamp Applicator and optional Sato M8485Se Print Engine



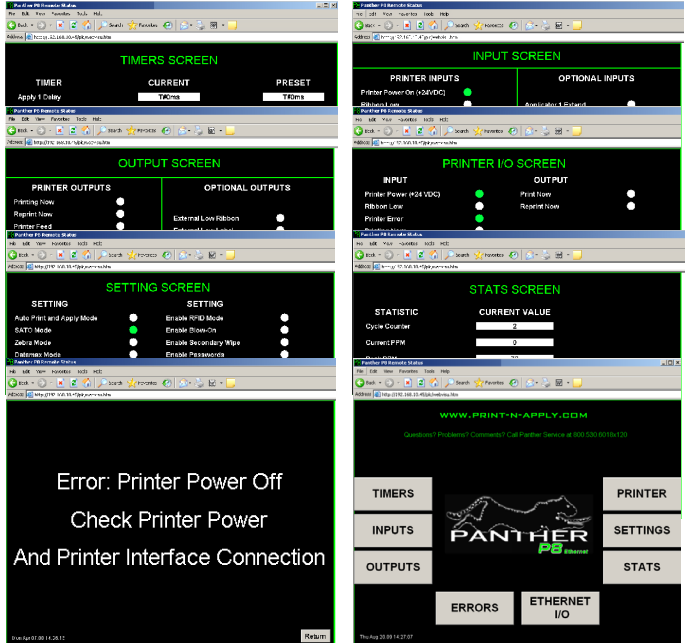
Panther P8 Full-Pneumatic with 8" Stroke Tamp Applicator

### Panther P8 Operator Touch Screen Interface (local)



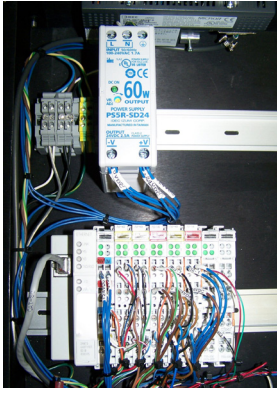
Full COLOR Touchscreen

### Panther P8 Web Pages (remote)



# Industrial Controls for an Industrial World

Panther Industries is dedicated to providing labeling solutions while utilizing ONLY "off-the-shelf" components. This means 100% INDUSTRIAL controls: No proprietary Controller Boards or Power Supplies that become outdated or can only be purchased through one source. This dedication ensures that our customers will always have access to the replacement components that they need, guaranteeing that their operation is always up and running in even the harshest environments. The Panther P8 is provided with 20 I/O Standard and expandable for up to 64 I/O for the control of external devices such as product stops, reject mechanisms and other I/O requirements. Additional I/O can be added by simply adding a slice of I/O to the control box and wiring the I/O directly to the I/O Block. Using this approach allows us to customize the Panther P8 to meet our customer's exact needs.



Our control system consists of an expandable slice I/O PLC, 24VDC power supply, operator interface, and one Solid State Relay.



## EtherNet/IP

The P8 will simply appear as a node on an Allen-Bradley EtherNet/IP network with the ability to exchange bit-level I/O variables.

## TCP/IP

The I/O within the Panther P8 can be mapped, monitored and/or controlled by an external PLC if it can communicate via EtherNet/IP or Modbus TCP/IP.



Intuitive Full Color Touch Screen

## Features

### Controls:

- Direct Allen Bradley Connectivity via EtherNet/IP (RJ-45 EIP)
- No expensive proprietary PC board controller
- Expandable "slice I/O" PLC (Scan Time <1ms)
- Full Color Touch Screen Operator Display
- System is configurable via operator interface
- ALL printer signals are utilized-STANDARD
- Low label detection-STANDARD
- Low ribbon detection-STANDARD
- Printer Status/Error monitoring included-STANDARD
- "Off-the-shelf" DIN rail mounted 24VDC 2.5A power supply
- Quick change electrical connections with no hardwiring
- Additional RS-232 ports interfacing with serial devices
- Lighted indicators wherever possible to provide feedback
- All I/O points with I/O descriptions shown on operator display-no schematics needed when troubleshooting
- Displays all possible error messages with error recovery with On-Screen Help
- Applicator "home" position sensor ensures applicator is home prior to printing a label for faster cycle times
- Web pages can be viewed from any PC on the network

### Design:

- Completely Modular System
- OEM Print Engine Design for printer replacement
- Only 4 bolts for quick print engine change-out
- The simplest, most reliable waste take-up system on the market with quick-change "O-ring" drive
- Simple label & ribbon loading
- Quick change modular control box
- Easy Access to air solenoids

### Construction:

- 1/2" thick, aircraft quality, aluminum "main-plate" for structural rigidity- "Window-Plate" Design
- Anodized aluminum and stainless steel throughout for corrosion resistance
- Only the finest grade industrial components used
- System can be placed in any orientation without the need for additional components or added cost

### Pneumatic:

- High speed Twin-bore tamp system
- "Zero-Waste" air consumption when unit is in idle state
- Built in OSHA approved Lockable pneumatic shut-off
- Built in filter-regulator unit
- Nickel plated brass quick change press-to-fit air fittings
- High-speed, low pressure pneumatic applicator system
- Fastest Applicator speed in the industry

### Included:

- Adjustable T-base stand included
- Operation and Maintenance manual with full-color photos
- Distribution CD with "Soft" copy of Panther manual and full print engine manuals
- Customer Satisfaction Guarantee
- One Year Warranty
- Demo CD also includes label printing software and other useful utilities to get your labeling system running ASAP

## Specifications

### Electrical:

- Input: 110~220VAC @ 5/2.5 AMPS 50/60Hz single phase
- Output: 24VDC @ 2.5 AMPS

### Pneumatic:

- 40-60 PSI @ 3 CFM (working) 0 CFM (idle)
- OSHA Approved Lockable Shut-off

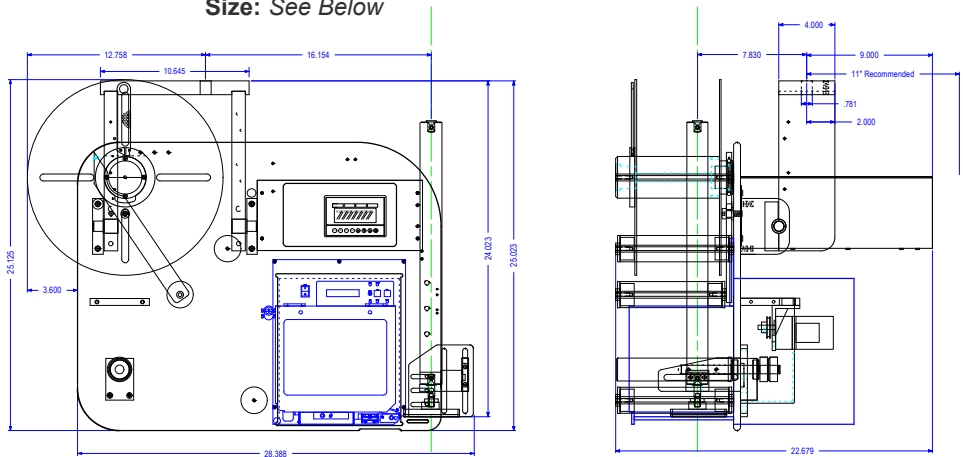
### Printer:

- Print Method: Thermal Transfer or Direct Thermal
- Print Width: 6.6" Maximum, .500" Minimum
- Print Length: 14" Maximum
- Print Resolution: 203, 300 & 600 DPI
- Media Supply: 14" O.D. on 3" Core
- Communication: Serial, Parallel, E-Net, Wireless E-net, USB

### Applicator:

- Placement Accuracy: Within 1/32"
- Maximum Reach: 24" (Pneumatic Tamp System)
- Speed: 140+ LPM (Determined by label size, label format, and application method)
- Tamp, Corner-Wrap, Blow-On, Wipe-On, Swing Arm, and more

### Size: See Below



**Panther P8 - Labeling Without Limits**

[www.print-n-apply.com](http://www.print-n-apply.com)